



**madad gate**  
بوابة المدد

# COMPANY PROFILE

**MADAD GATE  
YOUR TRUSTED PARTNER  
IN STEEL SUPPLY**

[www.madad-gate.com](http://www.madad-gate.com)



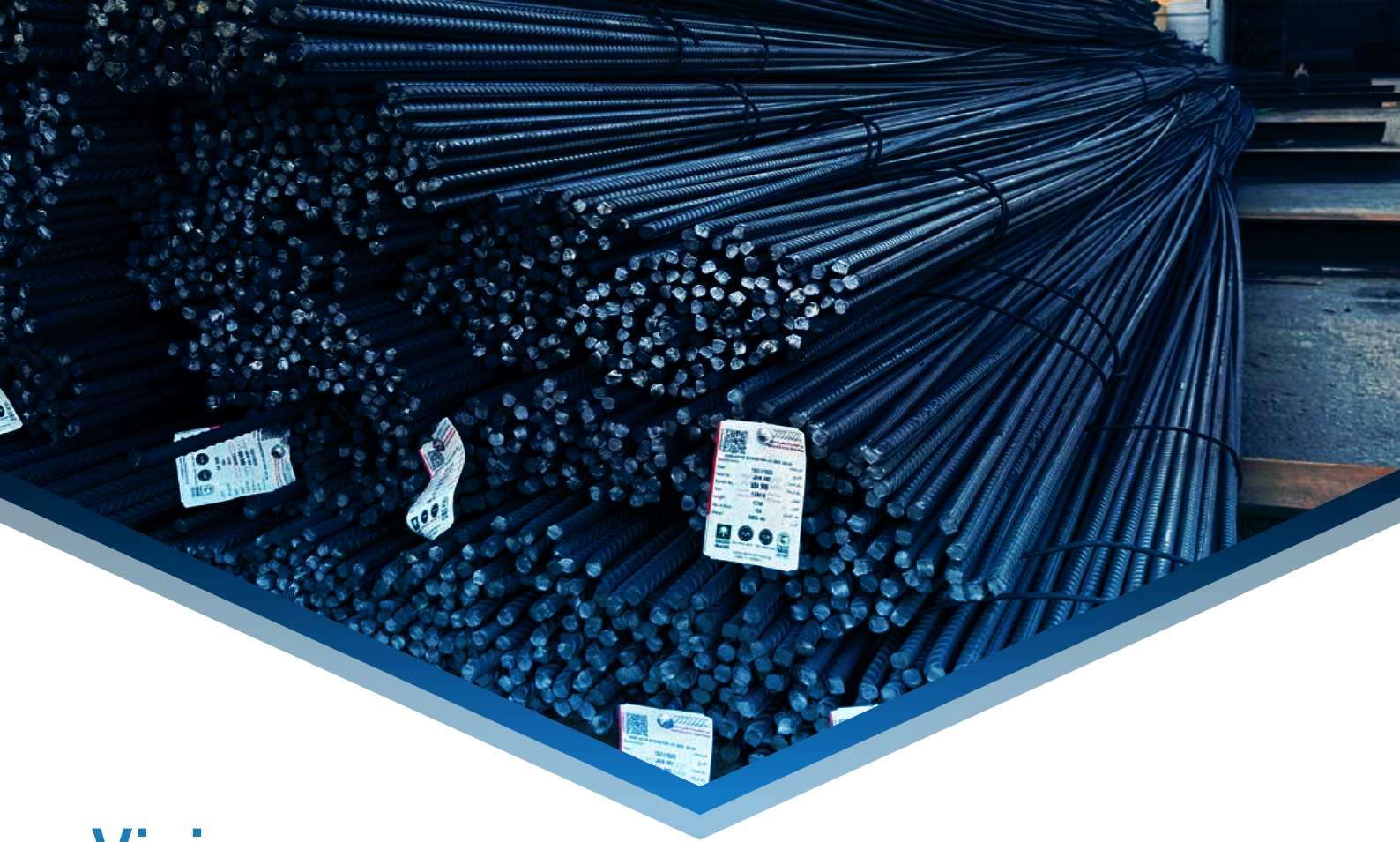
# Introduction About Organization

MADAD GATE TRADING COMPANY. works in the field of wholesale and retail trade in steel products and the supply of all building materials in Saudi Arabia

MADAD GATE TRADING COMPANY. Company is fully certified to accept government contracts and work with government sourced contractors, we are approved vendors of much multinational companies include Government Sector & Public Sector

MADAD GATE TRADING COMPANY. Company is one of the suppliers offers products Steel structures and commercial steel, used for the difficult jobs in engineering such as Steel Beams, Channels, angles, plates, and Rebar, wire mesh ... etc. These are the most common type of steel structures and are used in a wide range of buildings, from high-rise offices to residential homes and all mega projects

MADAD GATE TRADING COMPANY. Company Offering Extensive inventories in Steel Products, structures, with fabrication service and coting for materials (Hot Dip Galvanizing, Painting Coating, Epoxy Coated)



## Vision

Madad Gate Co. is specialized in steel and building materials trading, and we move ahead to contribute to the coexistence and prosperity of human society by creating value beyond mere profits based on exemplary products and services, and in order to being able to make constant contributions to national through provides wide variety of materials needed for all the projects ( small, medium and big ) (civil, building Constructions, plants, power plant and oil & gas, and other projects) we engaged mainly in steel related business with High-quality of Specifications Global and as per approved by SASO KSA, Aramco approved mills, Royal Commission .. Such as Rebar Steel, wire mesh, Woods, structural Steel for all sizes and thickness and standard

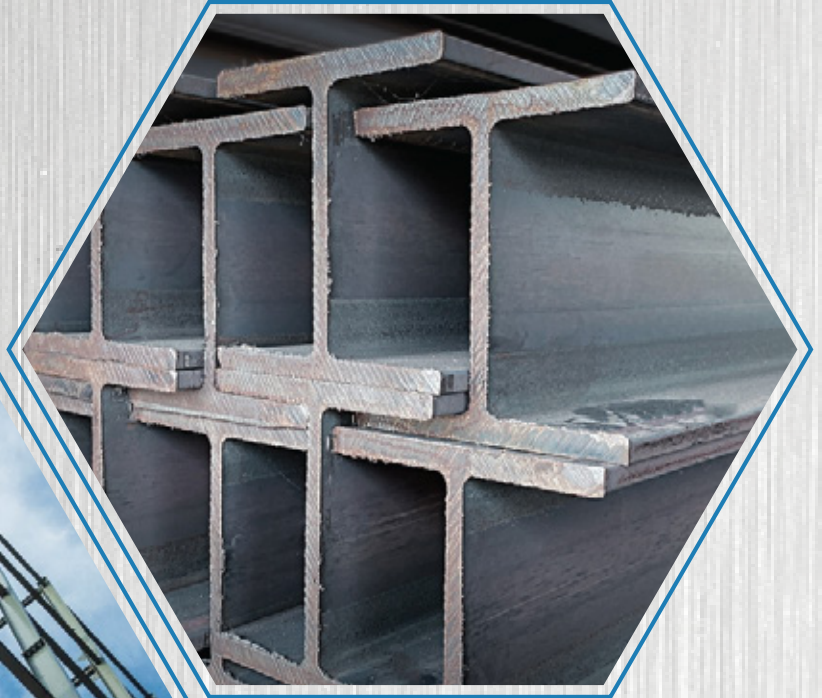
Uplifted to our Company to the level companies leading in building Materials sector to become more Competitive the market at Kingdom of Saudi Arabia

## Mission & Target

Our ambition and our dream and our belief in success is an important the standard in the continuity and development of our Company, we also seek to involve the customer to build trust with him and the formation of a special relationship ends to complete a lot of fruitful and successful business

## Value

Our sincerity towards our responsibilities and our services and our superiority, and we trust to our company, in ourselves, in our products, and in our customers



# PRODUCT CATALOGUE



Please you can see below our offered services.

Carbon Steel	Building Materials	Alloy Steel	Fabrication Service	Coating Service
Beam	Rebar	SS Plate	Cutting & Welding	Galvanizing Zinc
Angle	Wire Mesh	SS Sheet	Steel Base	Epoxy Coated
Channel	Gi Tie Wire	SS Angle	Embedded Plate	Painting Metals
Plate Plain	Timber	SS Rod	Embedded Angle	XXXXXX
Checked Plate	Plywood	Aluminum Sheet	Angle Frame	XXXXXX
Tube SQ & Rectangle	Wood Nail & Concrete	Gi Sheet	Pipe Supports	XXXXXX
Pipe Welded & Seamless	Metal Mesh	Brass Rod	Post Guard	XXXXXX
Round Bar	Rebar Cut & Bend	Copper Rod & Sheet	Post Chain	XXXXXX
Corrugated Sheet	XXXXXX	XXXXXX	Grating	XXXXXX
Flat Bar	XXXXXX	XXXXXX	Dowel Bar	XXXXXX



## LIST OF PROPOSED MATERIALS WITH MADAD GATE COMPANY

NO.	MANUFACTURER NAME	PROPOSED MATERIALS	SPECIFICATIONS
1.	MADAD GATE COMPANY	CATALOG OF STEEL MATERIALS	A36 - S275JR, ASTM A572 GR.50, A992, S355JR
2.	SABIC PROFILE	CS PLATE - CHECKERED	A36, ASTM A572 GR.50
3.	CHINA ORGIN	CS PLATE - BIG SIZE	A36 - S275JR, ASTM A572
4.	SLUB PROFILE	CHANNEL STEEL - UPN, UJIS, BEAMs, W, HIS, HEB	A36 - S275JR, ASTM A572, A992 GR.50, S355JR
5.	RIYADH STEEL PROFILE	ANGLE BAR, FLAT BAR	A36 - S275JR
6.	JAZEERA OMAN	ROUND BAR	A36, S275JR, ASTM A572 GR.50, S355JR
		CS PIPES E.R.W A53	
		U CHANNEL	
7.	RELIANCE STEEL INDUSTRIES	GRATING STEEL CLAMPS	ASTM A1011
8.	KOCEAR - TURKY PROFILE	C CHANNELS	A36 - S275JR, ASTM A572
9.	THL TUBE & PIPE INDUSTRIAL	STEEL TUBES	ASTM A500 Gr.B
10.	ABDUL KAREEM ML RAJHI STEEL COMPANY	STEEL REBAR	ASTM A615 GRADE 60

# Technical Data Sheet





# EQUAL ANGLES

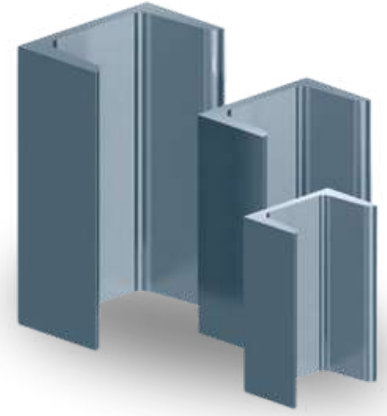
Product	EN Standard	ASTM Standard	Typical Grade	Typical Applications
Angle Bar	EN 10056 / EN 10025	ASTM A36 / A572	S275JR / S355JR / A36 / GR 50	Structural Supports, Framing

<b>TOLERANCES:</b> ASTM A6 - 05
<b>TOLERANCES:</b> EN 10056 - 2 - 1993

<b>DIMENSIONS:</b> ASTM A6 / A6M - 07
<b>DIMENSIONS:</b> DIN 1028

Length: 6 - 12 Metre

Size (mm)	Dimensions (mm), Unit Weights (kg/m)																			
	2,2	2,5	3	4	5	6	7	8	9	10	11	12	13	14	15	16	18	20	25	
20 x 20	0,66	0,74	0,88																	
25 x 25	0,83	0,94	1,11	1,45																
30 x 30		1,15	1,36	1,78	2,18															
35 x 35		1,35	1,6	2,09	2,57															
38 x 38		1,47	1,75	2,29	2,82															
40 x 40		1,55	1,84	2,42	2,97															
45 x 45			2,09	2,74	3,39															
50 x 50			2,33	3,06	3,77	4,47														
55 x 55				3,38	4,18	4,95														
60 x 60				4,13	4,57	5,42	6,26	7,09												
63 x 63					4,82	5,72	6,61	7,48												
65 x 65					4,97	5,91	6,83	7,73												
70 x 70					5,37	6,38	7,38	8,36												
75 x 75					5,78	6,87	7,94	9	10,05											
80 x 80						7,34	8,49	9,63	10,75	11,86										
90 x 90						8,3	9,61	10,9	12,18	13,45	14,7									
100 x 100							10,73	12,18	13,62	15,04	16,44	17,83								
110 x 110								13,43	15,03	16,61	18,17	19,71	21,25							
120 x 120								14,71	16,46	18,2	19,92	21,62	23,31	24,98						
130 x 130								15,99	17,9	19,79	21,67	23,53	25,37	27,2	29,01					
150 x 150										23	25,27	27,35	29,5	31,65	33,77	35,89	40,06	44,18		
160 x 160												29,26	31,60	33,87	36,16	38,43	42,92	47,34		
180 x 180												33,06	35,68	38,30	40,90	43,48	48,8	53,65	66,02	
200 x 200														42,69	45,61	48,50	54,25	59,25	73,87	



## UPN CHANNELS

Product	EN Standard	ASTM Standard	Typical Grade	Typical Applications
UPN	EN 10279 / EN 10025-2	ASTM A36 / A572	S275JR / S355JR / A36 / GR 50	Structural Supports, Framing

**TOLERANCES:**  
ASTM A6 - 05

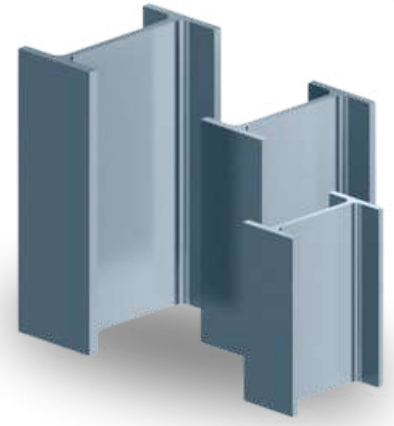
**DIMENSIONS:**  
ASTM A6 - 05

**TOLERANCES:**  
EN 10056 - 2 - 1993

**DIMENSIONS:**  
EN 10056 - 2 - 1993

### Length: 6-12 Metre

Size	h (mm)	b (mm)	s (mm)	t (mm)	G (kg/m)	A (mm) <sup>2</sup>
UPN 30	30	15	4	4,5	1,74	2,21
UPN 30	30	33	5	7	4,27	5,44
UPN 40	40	20	5	5,5	3,87	3,66
UPN 40	40	35	5	7	4,87	6,21
UPN 50	50	25	5	6	3,86	4,92
UPN 50	50	38	5	7	5,59	7,12
UPN 65	65	42	5,5	7,5	7,09	9,03
UPN 80	80	45	6	8,0	8,64	11
UPN 100	100	60	6	8,5	10,60	13,5
UPN 120	120	55	7	9,0	13,40	17
UPN 140	140	60	7	10,0	16,00	20,4
UPN 160	160	65	7,5	10,5	18,80	24
UPN 180	180	70	8	11,0	22,00	28
UPN 200	200	75	8,5	11,5	25,30	32,2
UPN 220	220	80	8	12,5	29,40	37,4
UPN 240	240	85	9,5	13	33,20	42,3
UPN 260	260	90	10	14	37,90	48,3
UPN 280	280	95	10	15	41,80	53,3
UPN 300	300	100	10	16	46,20	58,8



## IPE PROFILES

Product	EN Standard	ASTM Standard	Typical Grade	Typical Applications
IPE	EN 10365 / EN 10025-2	ASTM A36 / A572	S275JR / S355JR / A36 / GR 50	Bridges, Columns, Heavy Structures

**TOLERANCES:**  
ASTM A6 - 05

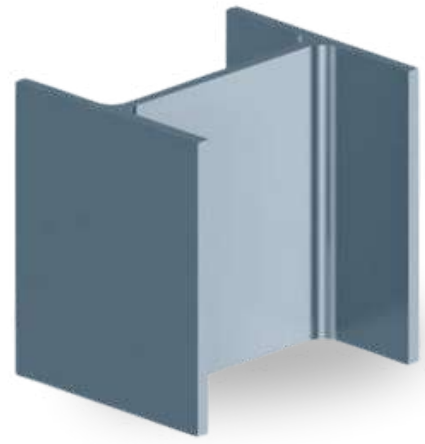
**TOLERANCES:**  
EN 10034 - 1993

**DIMENSIONS:**  
ASTM A6 / A6M - 07

**DIMENSIONS:**  
DIN 10125 - 1 - 1995

**Length: 6-12 Metre**

Size	h (mm)	b (mm)	s (mm)	t (mm)	G (kg/m)	A (mm) <sup>2</sup>
IPE 80	80	46	3,8	5,2	6,0	7,64
IPE 100	100	55	4,1	5,7	8,1	10,30
IPE 120	120	64	4,4	6,3	10,4	13,20
IPE 140	140	73	4,7	6,9	12,9	16,40
IPE 160	160	82	5,0	7,4	15,8	20,10
IPE 180	180	91	5,3	8,0	18,8	23,90
IPE 200	200	100	5,6	8,5	22,4	28,50
IPE 220	220	110	5,9	9,2	26,2	33,40
IPE 240	240	120	6,2	9,8	30,7	39,1
IPE 270	260	135	6,6	10,2	36,1	45,9
IPE 300	300	150	7,1	10,7	42,2	53,8



# HEA PROFILES

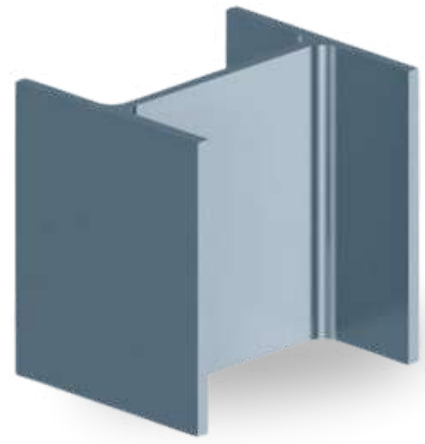
Product	EN Standard	ASTM Standard	Typical Grade	Typical Applications
HEA	EN 10365 / EN 10025-2	ASTM A36 / A572	S275JR / S355JR / A36 / GR 50	Bridges, Columns, Heavy Structures

<b>TOLERANCES:</b> ASTM A6 - 05
<b>TOLERANCES:</b> EN 10034 - 1993

<b>DIMENSIONS:</b> ASTM A6 / A6M - 07
<b>DIMENSIONS:</b> DIN 10125 - 1 - 1995

Length: 6-12 Metre

Size	h (mm)	b (mm)	s (mm)	t (mm)	G (kg/m)	A (mm) <sup>2</sup>
HE 100 A	96	100	5	8	16.7	21.24
HE 210 A	114	120	5	8	19.9	25.34
HE 140 A	133	140	5.5	8.5	24.7	31.42
HE 160 A	152	160	6	9	30.4	38.77
HE 180 A	171	180	6	9.5	35.5	45.25
HE 200 A	190	200	6.5	10	42.3	53.83
HE 220 A	210	220	7	11	50.5	64.34
HE 240 A	230	240	7.5	12	60.3	76.84
HE 260 A	250	260	7.5	12.5	68.2	86.82
HE 280 A	270	280	8	13	76.4	97.26
HE 300 A	290	300	8.5	14	88	112.5
HE 320 A	310	300	9	15.5	97.6	124.4
HE 340 A	330	300	9.5	16.5	105	133.5
HE 360 A	350	300	10	17.5	112	142.8
HE 400 A	390	300	11	19	125	159
HE 450 A	440	300	11.5	21	140	178
HE 500 A	490	300	12	23	155	197.5
HE 550 A	540	300	12.5	24	166	211.8
HE 600 A	590	300	13	25	178	226.5
HE 650 A	640	300	13.5	26	190	241.6
HR 700 A	690	300	14.5	27	204	260.5
HE 800 A	790	300	15	28	224	285.8
HE 900 A	890	300	16	30	252	320.5
HE 1000 A	1000	300	16.5	31	272	346.8



## HEB PROFILES

Product	EN Standard	ASTM Standard	Typical Grade	Typical Applications
HEB	EN 10365 / EN 10025-2	ASTM A36 / A572	S275JR / S355JR / A36 / GR 50	Bridges, Columns, Heavy Structures

**TOLERANCES:**  
ASTM A6 - 05

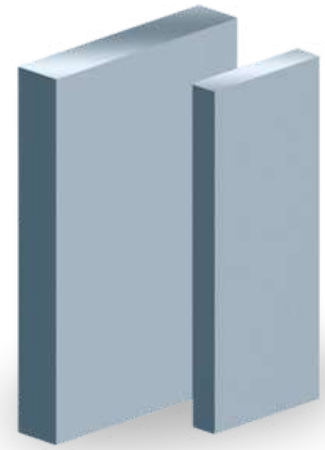
**TOLERANCES:**  
EN 10034 - 1993

**DIMENSIONS:**  
ASTM A6 / A6M - 07

**DIMENSIONS:**  
DIN 10125 - 1 - 1995

**Length: 6-12 Metre**

Size	h (mm)	b (mm)	s (mm)	t (mm)	G (kg/m)	A (mm) <sup>2</sup>
HE 100 B	100	100	6	10	20.4	26.04
HE 210 B	120	120	6.5	11	26.7	34.01
HE 140 B	140	140	7	12	33.7	42.96
HE 160 B	160	160	8	13	42.6	54.25
HE 180 B	180	180	8.5	14	51.2	65.25
HE 200 B	200	200	9	15	61.3	78.08
HE 220 B	220	220	9.5	16	71.5	91.04
HE 240 B	240	240	10	17	83.2	106
HE 260 B	260	260	10	17.5	93	118.4
HE 280 B	280	280	10.5	18	103	131.4
HE 300 B	300	300	11	19	117	149.1
HE 320 B	320	300	11.5	20.5	127	161.3
HE 340 B	340	300	12	21.5	134	170.9
HE 360 B	360	300	12.5	22.5	142	180.6
HE 400 B	400	300	13.5	24	155	197.8
HE 450 B	450	300	14	26	171	218
HE 500 B	500	300	14.5	28	187	238.6
HE 550 B	550	300	15	29	199	254.1
HE 600 B	600	300	15.5	30	212	270
HE 650 B	650	300	16	31	225	286.3
HE 700 B	700	300	17	32	241	306.4
HE 800 B	800	300	17.5	33	262	334.2
HE 900 B	900	300	18.5	35	291	371.3
HE 1000 B	1000	300	19	36	314	400



## FLAT BARS

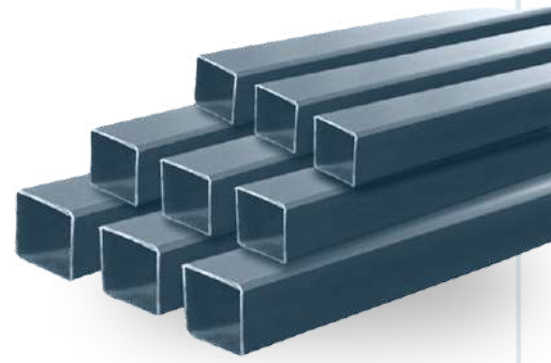
Product	EN Standard	ASTM Standard	Typical Grade	Typical Applications
Flat Bar	EN 10058 / EN 1005	ASTM A36	S275JR / A36	Fabrication, Brackets, Gates

**TOLERANCES:**  
ASTM A6 - 05  
**TOLERANCES:**  
EN 10056 - 2 - 1993

**DIMENSIONS:**  
ASTM A6 / A6M - 07  
**DIMENSIONS:**  
DIN 1017 - 1967

Length: 6-12 Metre

Size (mm)	Dimensions (mm), Unit Weights (kg/m)																	
	3	4	5	6	7	8	9	10	11	12	14	15	16	20	25	30	35	40
14	0,33	4,396	0,55	0,66														
16	0,38	0,50	0,63	0,75	0,88	1,00												
18	0,42	0,57	0,71	0,85	0,99	1,13	1,27											
20	0,59	0,63	0,79	0,94	1,10	1,26	1,41	1,57										
25	0,71	0,79	0,98	1,18	1,37	1,57	1,77	1,96										
30	0,82	0,94	1,18	1,41	1,65	1,88	2,12	2,36										
35	0,94	1,10	1,37	1,65	1,92	2,20	2,47	2,75										
40		1,26	1,57	1,88	2,20	2,51	2,83	3,14	3,45	3,77	4,40	4,71	5,02	6,28	7,85			
45		1,41	1,77	2,12	2,47	2,83	3,18	3,53	3,89	4,24	4,95	5,3	5,65	7,07	8,83			
50		1,57	1,96	2,36	2,75	3,14	3,53	3,93	4,32	4,71	5,50	5,89	6,28	7,85	9,81	11,78		
60				2,83	3,30	3,77	4,239	4,71	5,171	5,65	6,59	7,07	7,54	9,42	11,78	14,13	16,49	18,84
70				3,30	3,85	4,40	4,95	5,50	6,04	6,59	7,69	8,24	8,79	10,99	13,74	16,49	19,23	21,98
80				3,77	4,40	5,02	5,65	6,28	6,91	7,54	8,79	9,42	10,05	12,56	15,70	18,84	21,98	25,12
90				4,24	4,95	5,65	6,36	7,07	7,77	8,48	9,89	10,60	11,30	14,13	17,66	21,20	24,73	28,26
100				4,71	5,50	6,28	7,07	7,85	8,64	9,52	10,99	11,78	12,56	15,70	19,63	23,55	27,48	31,40
120						7,54	8,48	9,42	10,36	11,30	13,19	14,13	15,07	18,84	23,55	28,26	32,97	37,68
125						7,85	8,83	9,81	10,79	11,78	13,74	14,72	15,70	19,63	24,53	29,44	34,34	39,25
130							9,18	10,21	11,23	12,25	14,29	15,31	16,33	20,41	25,51	30,62	35,72	40,82
135							9,54	10,60	11,66	12,72	14,84	15,90	16,96	21,20	26,49	31,79	37,09	42,39
140							9,89	10,99	12,09	13,19	15,39	16,29	17,58	21,98	27,48	32,97	38,47	43,96
145							10,24	11,38	12,52	13,66	15,94	17,07	18,21	22,77	28,46	34,15	39,84	45,53
150							10,60	11,78	12,95	14,13	16,49	17,66	18,84	23,55	29,44	35,33	41,21	47,1



## SQUARE BARS

Product	EN Standard	ASTM Standard	Typical Grade	Typical Applications
Square Tube	EN 10210 / EN 10219	ASTM A500 Gr. B / C	S235JR / S355JR / S275JR	Steel Structures, Frames, Construction, Cladding

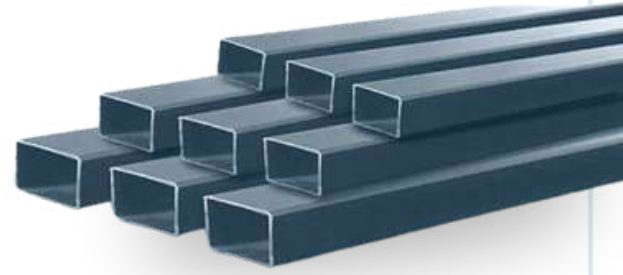
**TOLERANCES:**  
ASTM A6 - 05

**TOLERANCES:**  
EN 10210 / EN 10219

**DIMENSIONS:**  
ASTM A6 / A6M - 07

**DIMENSIONS:**  
DIN 1028

Size (mm)	Dimensions (mm), Unit Weights (kg/m)												
	1.2	1.5	1.8	2	2.5	3	4	5	6	8	9	10	12
20 x 20	0.66	1	0.91	0.99	1.17	1.33							
25 x 25	0.87	1.06	1.23	1.53	1.64	1.9							
30 x 30	1.06	1.3	1.53	1.68	2.03	2.36	2.94						
38 x 38		1.67	1.98	2.18	2.66	3.15	4						
40 x 40		1.77	2.09	2.31	2.4	3.3	4.2	5	5.7				
50 x 50		2.25		2.93	3.6	4.25	5.45	6.56	7.56				
60 x 60		2.71		3.56	4.39	5.19	6.71	8.13	9.45				
70 x 70		3.18		4.2	5.17	6.13	7.97	9.7	11.33				
75 x 75		3.42		4.5	5.56	6.6	8.49	11	12.3				
80 x 80				4.82	5.96	7.07	9.22	11.3	13.2	16.4	17.9		
90 x 90				5.4	6.7	8.92	11	12.8	15	19	21		
100 x 100				6.07	7.53	9	11.7	14.4	17	21.8	25.53	25.6	28.31
120 x 120					9.1	10.8	14.2	17.5	20.7	26.4	29.2	31.8	35.8
140 x 140							16.8	20.7	24.5	31.4		38.1	43.3
150 x 150							18	22.3	26.4	33.9	37.66	41.3	31.65
160 x 160							19.3	23.8	28.3	37		44.4	51
180 x 180							22	27	32.1	42		50.7	58.5
200 x 200							24.3	30.1	35.8	47		57	66
250 x 250							30.57	38	45.2	59		72.7	84.4



## RECTANGLE BARS

Product	EN Standard	ASTM Standard	Typical Grade	Typical Applications
Rectangular Tube	EN 10210 / EN 10219	ASTM A500 Gr. B / C	S235JR / S355JR / S275JR	Steel Structures, Frames, Construction, Cladding

<b>TOLERANCES:</b> ASTM A6 - 05
<b>TOLERANCES:</b> EN 10210 / EN 10219

<b>DIMENSIONS:</b> ASTM A6 / A6M - 07
<b>DIMENSIONS:</b> DIN 1028

Dimensions (mm), Unit Weights (kg/m)													
Size (mm)	1.2	1.5	1.8	2	2.5	3	4	5	6	8	9	10	12
40 x 20	1.1	1.3	1.53	1.68	2.03	2.36							
50 x 25		1.65	1.95	2.15	2.62	3.07	3.88						
60 x 30		1.34	1.6	2.62	3.21	3.77	4.83						
60 x 40		2.23	2.66	2.93	3.6	4.25	5.45	6.56	7.56				
80 x 40		2.71	3.22	3.56	4.39	5.19	6.71	8.13	9.45				
80 x 60		3.18		4.19	5.17	6.12	7.97	9.7	11.33				
90 x 50				4.19	5.17	6.12	7.97	9.7	11.33				
70 x 30		2.24		2.93	3.6	4.25	5.45	6.56	7.56				
75 x 50		2.83	3.73	3.72	4.58	5.42	7.02	8.52	9.92				
80 x 20		2.24		2.93	3.6	4.25	5.45	6.56	7.56				
100 x 50		3.42		4.5	5.6	6.6	9	10.5	12				
120 x 60					6.74	8	10.5	12.8	15.1	18.9			
140 x 60				6.07	7.53	8.96	11.73	14.41	16.98				
140 x 80				6.7	8.31	9.9	13	15.98	19				
150 x 75				6.86	8.51	10.13	13.3	16.37	19.34	24.53	27.07		
150 x 100						11.31	14.9	18.3	21.7	27.7	30.6	33.4	37.7
300 x 150							27.43	34.03	40.5	52.8		64.8	75.4
300 x 200							30.6	38	45.2	59.1		72.7	85



# ITEMS -

## 1. Building Material:

- A. Deformed Steel Bar  
Black, Epoxy
- B. Welded Wire Mesh  
Black Wire Mesh, Epoxy Coated, Galvanizing
- C. Reinforcement Accessories  
Binding Wire, Clamps, Props Jack
- D. White Timber
- E. Plywood  
Ordinary Plywood, Marin Plywood
- F. Hard Wood

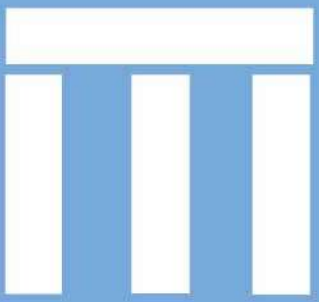
## 2. Commercial & Structural Steel:

- A. Beams & Sections  
HEA, HEB, JIS Beams, IPE, IPN, IPE-AA
- B. Hollow Sections:  
Square / Rectangular / Round Tubes
- C. Channels  
U-Channel, UPN, UPE, PFC.
- D. Mild Steel Bars & Angles  
Eq. Angle, Un-Eq. Angles, Flat Bars, Square Bars, T-Bars, RoundBars (CF/HR/ MS).
- E. Flat Products Sheets  
HR, GI, CR, Alum, Stainless, Checkered

## 3. Electric Tubing & Conduit:

- A. EMT Pips , RMC Pips, PVC conduit
- B. Electric Accessories

**madani**

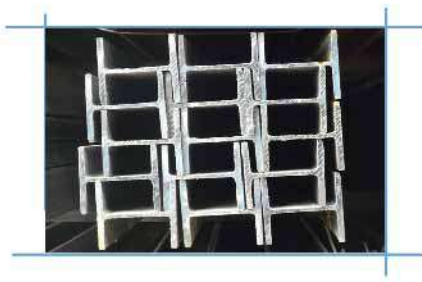


**gate**

**Offer a Solution for All  
Types of Construction**

## ■ BEAMS

ITEM DESCRIPTION	TYPE	SIZE	SPECIFICATIONS
I - Beams	IPE - IPN - IBE AA	all sizes	A-36, A992, A572-50. & another Std
Beams	HEA - HEB - W - UC	all sizes	A 36 - A 572 Gr.50, & another Std



## ■ Tubes

ITEM DESCRIPTION	TYPE	SIZE	SPECIFICATIONS
Tubes	Square Tubes	all sizes	ASTM A500 Gr.A - A53 Gr.A.B
Tubes	rectangle Tubes	all sizes	ASTM A500 Gr.A - A53 Gr.A.B



## ■ Channels

ITEM DESCRIPTION	TYPE	SIZE	SPECIFICATIONS
Channels	U - Channels	all sizes	ASTM A 36 - A 572 Gr.50, & another Std
Channels	UPE - UPN - PFC	all sizes	ASTM A 36 - A 572 Gr.50, & another Std



## ■ Angles & Bar

ITEM DESCRIPTION	TYPE	SIZE	SPECIFICATIONS
Angles & Bar	Equal Angles	all sizes	ASTM A 36 - A 572 Gr.50
	Unqual Angles	all sizes	ASTM A 36 - A 572 Gr.50
	Flat Bars	all sizes	ASTM A 36 - A 572 Gr.50
	Round Bar ( MS - CF)	all sizes	ASTM A 36 - A 572 Gr.50



## Deformed Steel Bar ASTM 615 Gr.60

ITEM DESCRIPTION	ORIGIN	SIZE	SPECIFICATIONS	REMARKS
DEFORMED STEEL REBAR	SABIC STEEL			
	ITTEFQ STEEL	8mm to 40mm	ASTM A615 Gr.60	Aramco Approved
	RAJHI STEEL			
	Emirates Steel	8mm to 40mm	ASTM A615 Gr.60	
	Qatar Steel			



  
 عبد الكريم الراجحي للحديد  
 AbdulKarim Al-Rajhi Steel

  
 سابك  
 عناك



المواصفة الأمريكية ASTM A 615 / A 615 M

«المواصفات القياسية لاسياخ حديد التسليح»

For Deformed Re-bar in bundle or coil (Available weldable & non-weldable)  
Designation: A 615/A 615M (American Standard ASTM  
"Standard Specification for deformed steel bars for concrete reinforcement" )



## LINEAR MASS AND NUMBER OF BARS IN BUNDLES

Diameter mm	Nominal linear mass Kg/m	Tolerance in linear mass (maximum)			GCC Standard GS06/ ISO 6935-2/2007	Number of 12 m long bars in a bundle of nominal weight of 2 tons.
		ASTM A615	BS 4449:1997	BS 4449:2005		
10	0.617	- 6 %	± 6.5 %	± 4.5 %	± 6 %	270
12	0.888	- 6 %	± 4.5 %	± 4.5 %	± 6 %	188
14	1.210	- 6 %	± 4.5 %	± 4.5 %	± 5 %	138
16	1.580	- 6 %	± 4.5 %	± 4.5 %	± 5 %	105
18	2.000	- 6 %	± 4.5 %	± 4.5 %	± 5 %	84
20	2.470	- 6 %	± 4.5 %	± 4.5 %	± 5 %	68
22	2.980	- 6 %	± 4.5 %	± 4.5 %	± 4 %	56
25	3.850	- 6 %	± 4.5 %	± 4.5 %	± 4 %	44
28	4.830	- 6 %	± 4.5 %	± 4.5 %	± 4 %	34
32	6.310	- 6 %	± 4.5 %	± 4.5 %	± 4 %	26
36	7.990	- 6 %	± 4.5 %	± 4.5 %	± 4 %	21
40	9.870	- 6 %	± 4.5 %	± 4.5 %	± 4 %	17

حديد التسليح البناء:

توريد حديد التسليح بكافة القياسات

10, 12, 14, 16, 18, 20, 22, 25, 28, 32, 40 مم .

Rebars/Reinforcement Steel For Building:

We supply steel bars in all sizes

10, 12, 14, 16, 18, 20, 22, 25, 28, 32, 40 mm.

## Welded Wire Mesh ASTM A497/A496

ITEM DESCRIPTION	ORIGIN	SIZE	SPECIFICATIONS	REMARKES
WIRE MESH	Saudi Origin	4MM TO 10MM	ASTM A497\ 496	

## Epoxy Coated Wire Mesh ASTM A884M

Epoxy Wire Mesh	Saudi Origin	4MM TO 10MM	ASTM A884	We can supply as per aramco approval
-----------------	--------------	-------------	-----------	--------------------------------------

## Galvanizing Wire Mesh ASTM A797

Galvanized Wire Mesh	Saudi Origin	4MM TO 10MM	ASTM A797	
----------------------	--------------	-------------	-----------	--

ASTM A497/A496



ASTM A884M



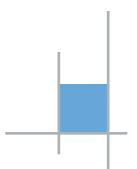
ASTM A797



  
 عبد الكريم الراجحي للحديد  
 AbdulKarim Al-Rajhi Steel

  
 سابك  
 SABAB

  
 الشركة العامة للتقنية  
 AL-TERAQEEQ





Specification	Ultimate tensile strength (minmum)	
	N\mm <sup>2</sup>	Kg\mm <sup>2</sup>
ASTM a 185	517	52.70
ASTM a 497	517	52.70
BS 4483	460	46.90
Din 488	550	56.08

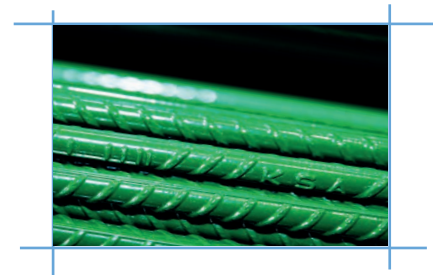
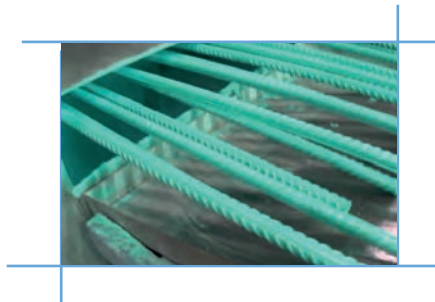
## Welded wire fabric british standard bs 4483 , 2.4m wide x 4.8m long



Ref.	Nomial pitch of wires		Diameter of wire		Sectional area per meter width		Nominal mass per m	No. of sheets \ton
	main	cross	Main mm	Cross mm	Main mm	Cross mm	Kg	
a393	200	200	10	10	393	393	6.16	15
a252	200	200	8	8	252	252	3.95	22
a193	200	200	7	7	193	193	3.02	29
a142	200	200	6	6	142	142	2.22	40
a98	200	200	5	5	98	98	1.54	57
b1131	100	200	12	8	1131	252	10.90	8
b785	100	200	10	8	785	252	8.14	11
b503	100	200	8	8	503	252	5.93	15
b385	100	200	7	7	385	193	4.53	20
b283	100	200	6	7	283	193	3.73	24
b196	100	200	5	7	196	193	3.05	29
c785	100	400	10	6	785	70.8	6.72	13
c636	100	400	9	6	636	70.8	5.55	16
c503	100	400	8	5	503	49.0	4.34	21
c385	100	400	7	5	385	49.0	3.41	26
c283	100	400	6	5	283	49.0	2.61	34
d98	200	200	5	5	98.0	98.0	1.54	57
d49	100	100	2.5	2.5	49.0	49.0	0.77	113

## ■ Epoxy Coated Rebar Steel ASTM A775M

ITEM DESCRIPTION	ORIGIN	SIZE	SPECIFICATIONS	REMARKS
EPOXY COATED STEEL BAR	SABIC STEEL			We can supply as per aramco approval
	ITTEFQ STEEL	8mm to 40mm	ASTM A775	
	RAJHI STEEL			
	Emirates Steel	8mm to 40mm	BS 4449 Gr.500B	
	Qatar Steel	8mm to 40mm	ASTM A615 Gr.60	



  
 عبد الكريم الراجحي للحديد  
 AbdulKarim Al-Rajhi Steel

  
 سابك  
 عندك

  
 الشركة المتحدة للتجارة  
 AL-ITTEFAQ STEEL

## White Timber

ITEM DESCRIPTION	ORIGIN	SIZE
White Timber	Romanian, Canadian Austrian, Swedish and German	All Sizes 8X8X3mtr - 8X8X4mtr 10X10X3mtr - 10X10X4mtr 2,5X10X3mtr - 2,5X10X4mtr 5X25X3,6

## ■ Plywood

ITEM DESCRIPTION	ORIGIN	SIZE	Specifications
Plywood Marine	Indonesi, Chinese	All Sizes 4X8X18mm 2X8X18mm	ordinary , marine





#### ITEM DESCRIPTION

Jack Support Steel

#### ORIGIN

UAE - Ajman ATI

#### SIZE

3,9 m



#### ITEM DESCRIPTION

clamps columens

#### ORIGIN

KSA

#### SIZE

All Size



#### ITEM DESCRIPTION

Wood Niles

#### ORIGIN

KSA

#### SIZE

¾" to 4"

#### SPECIFICATIONS

ASTM F 1667



#### ITEM DESCRIPTION

- TIE WIRE
- Epoxy Coated Tie Wire

#### ORIGIN

CHINESE AND AS PER YOUR REQUESTS

#### SIZE

16g - 22g

#### SPECIFICATIONS

AS CUSTOMER REQUEST SPECI

# Commercial and structural Steel



**SIZE**

5mm - 100mm

1.2mm - 12mm

**SPECIFICATIONS**

ASTM A36/ A 572 GR50/ S275JR. ETC

**ITEM DESCRIPTION**

Flat Productes

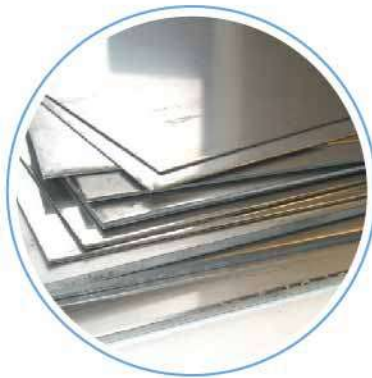
**TYPE**

Hot Rolld Plates

Hot Rolld Sheets

**REMARKES**

Aramco Approved Mills



**SIZE**

All Size

**SPECIFICATIONS**

304 - 316 L

**ITEM DESCRIPTION**

STAINLESS STEEL SHEET

**ORIGIN**

KSA



**ITEM DESCRIPTION**

Bolts

**ORIGIN**

KSA

**SIZE**

All Size

**SPECIFICATIONS**

All SPECIFICATIONS ASTM

**REMARKES**

as Aramco Approved



**ITEM DESCRIPTION**

Carbon Steel Pipes

**TYPE**

Seamless SCH 10,20 STD 30,40,60

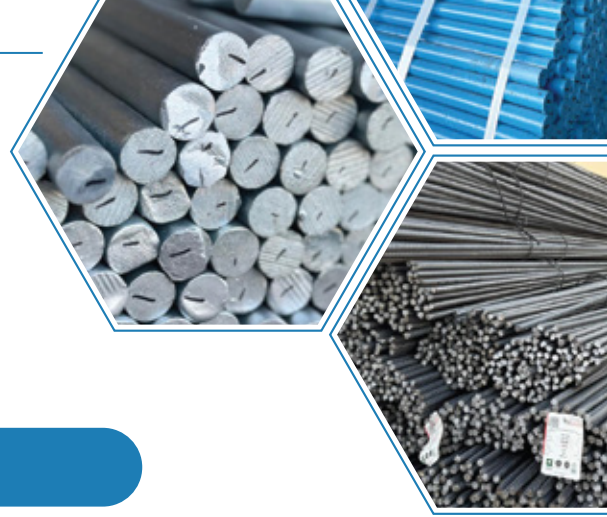
**SIZE**

1/5" - 24"

**SPECIFICATIONS**

ASTM 52/A 106/ API L5 GR.A/B .ETC





## ROUNDS

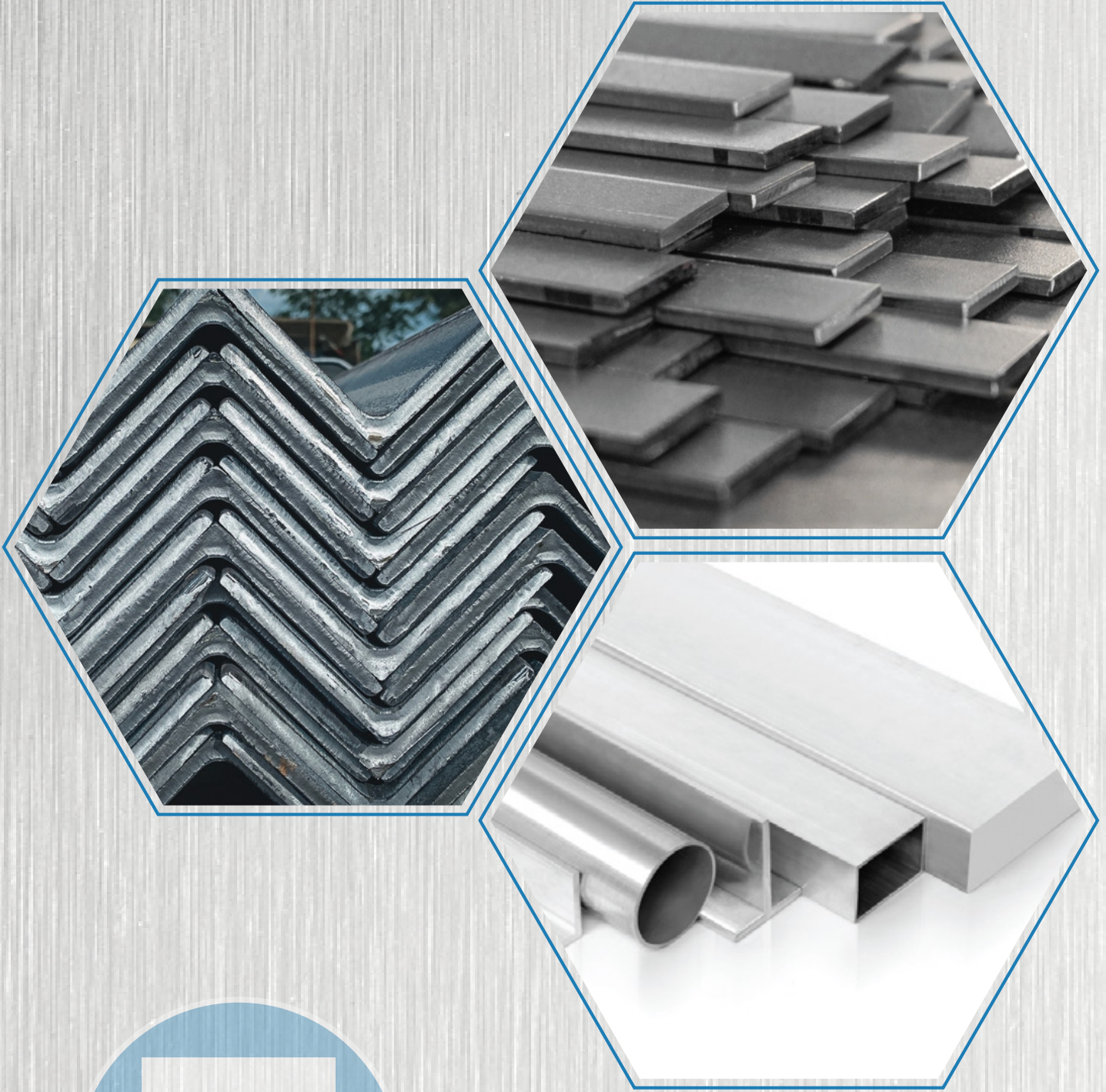
16	20	24	25	30	32	36	40	42	45	48	50
1.58	2.47	3.55	3.85	5.55	6.31	7.99	9.86	10.88	12.48	14.20	15.41
±0.50	±0.50	±0.50	±0.50	±0.60	±0.60	±0.80	±0.80	±0.80	±0.80	±0.80	±0.80

- STRAIGHTNESS ... D < 25mm tolerance Not established
- TOLERANCE ON MASS 10 mm to 50 mm (DIA) ± 4 % section weight
- TOLERANCE ON LENGTH + 100 mm where minimum length are required

## SQUARES

Thickness (mm)	Kg/Mtr	Tol.	Twist	Corner Radius
			4°/M with a max of 24°	r < 1mm
12	1.13	± 0.50		
13	1.33	± 0.50		
14	1.54	± 0.50		
15	1.77	± 0.50		
16	2.01	± 0.50	3°/M with a max of 18°	r < 1.5mm
18	2.54	± 0.50		
20	3.14	± 0.50		
25	4.91	± 0.50		
30	7.07	± 0.6		
32	8.04	± 0.6		
35	9.62	± 0.6		
40	12.60	± 0.80		
45	15.90	± 0.80		
50	19.6	± 0.80		

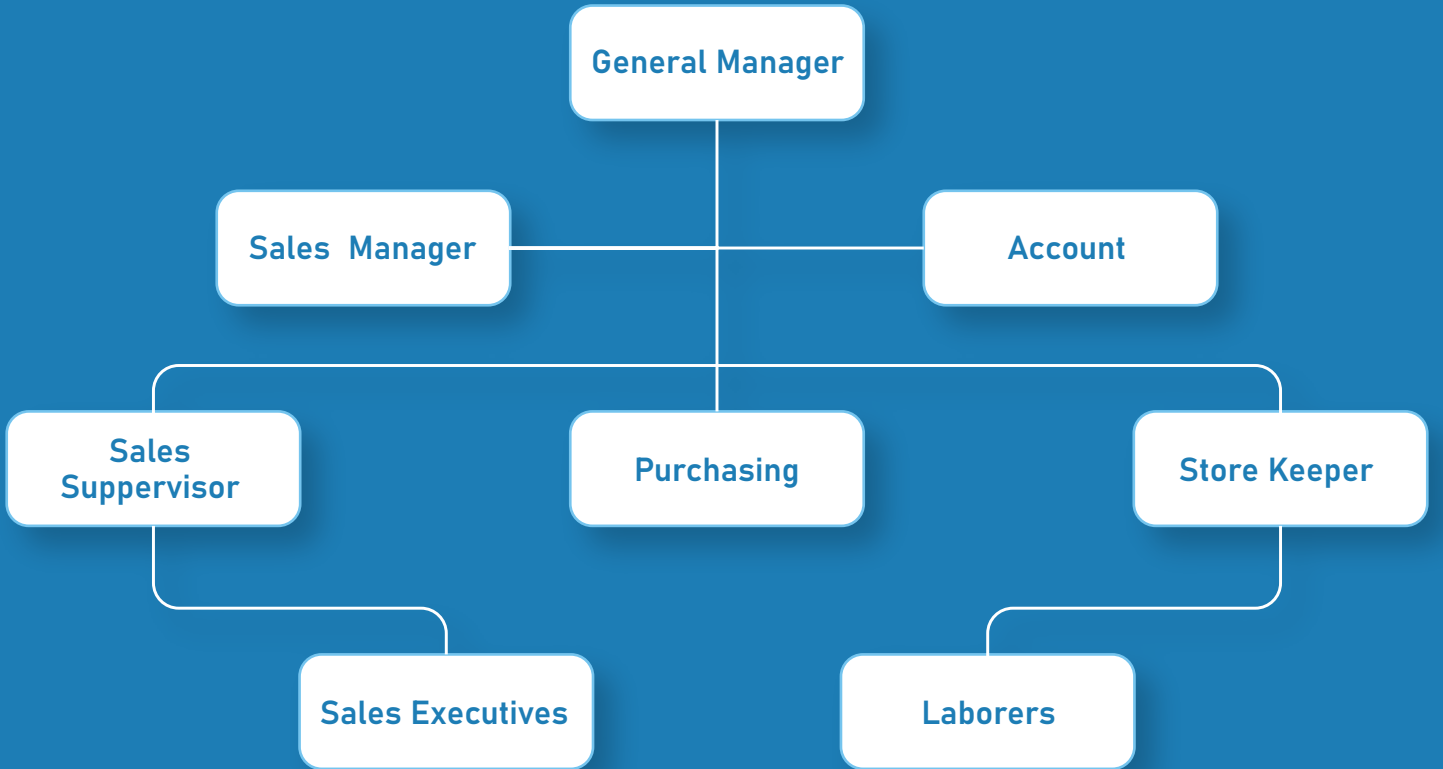
STRAIGHTNESS Nominal size a < 25 Not fixed 25mm to 80mm Tolerance 0.4% L over full bar length  
TOLERANCE ON LENGTH ... + 100 MM where minimum length are required



**BUSINESS CERTIFICATES**



madad gate  
بوابة المدد





## شهادة المحتوى المحلي Local content certification

The Local Content & Government Procurement Authority certifies that the Local Content Score for [madad gate] Commercial Registration [2050218537] for the year ended in 31/12/2024, is 57.76%.

This certificate expires on 31/07/2026.

### Note:

This certificate was issued according to the procedures followed by the Authority and based on the disclosure submitted by the entity and the report issued by the approved audit firm, without holding LCGPA minimally responsible.

This certificate is sent via electronic mail / automated system and it does not require a signature.

تشهد هيئة المحتوى المحلي والمشتريات الحكومية أن نسبة المحتوى المحلي لـ [شركة بوابة المدد التجارية] رقم السجل التجاري [2050218537]، للسنة المالية المنتهية بتاريخ 2024/12/31م، تبلغ 57.76%.

تنتهي صلاحية هذه الشهادة في 2026/07/31م.

### تنويه:

تم إصدار هذه الشهادة بحسب الإجراءات المتبعة لدى الهيئة بناء على الإفصاح المقدم من المنشأة و التقرير الصادر من مكتب المراجعة المعتمد، دون أدنى مسؤولية على الهيئة.

هذه الوثيقة مرسلة عبر البريد الإلكتروني/ النظام الآلي ولا تحتاج إلى توقيع.

Issuance Date: 06.03.2025  
CCC Reference Number: 13-02-060325-R



## Cybersecurity Compliance Certificate

This is to confirm that

### **Madad Gate Trading Co.**

Commercial Registration No.: 2050218537

Al Fayha district - Dammam - Saudi Arabia

was subject to an assessment by Seven Technologies to evaluate its compliance with Saudi Aramco Third Party Cybersecurity Standard (SACS-002). Based on the assessment carried out between **May 22, 2025** and **June 02, 2025**, Madad Gate was found to be compliant with the Standard.

For the classification of:

**General Requirements, Type: CCC**

This certificate is valid for a period of two years from the date of issuance.

#### Disclaimer:

This certificate is provided based on the information provided by Madad Gate that indicates their cybersecurity posture at the time of the assessment. Seven Technologies has not evaluated the adequacy or appropriateness of the Standard compiled by Saudi Aramco. Seven Technologies evaluation was limited to assessment against Saudi Aramco Third Party Cybersecurity Standard (SACS-002) and should not be relied upon as an assurance beyond the areas covered by this Standard. Seven Technologies shall not be liable for any loss, damages, costs or expenses directly or indirectly incurred by any third party, who may rely upon this certificate for whatsoever reason. This certificate is only for the purpose of meeting the requirements of Saudi Aramco and should not be published on any website or relied upon by anyone other than Saudi Aramco.



*Fahad Ak*

Authorized Signatory

By Audit Firm



# CERTIFICATE

*This is to certify that the Quality Management System of*

## **MADAD GATE TRADING COMPANY**

**Al Fayha, Dammam, Saudi Arabia P.O. Box 3503, Dammam 32441**

*has been assessed and found to conform to the requirements of*

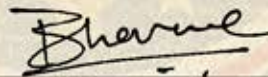
# **ISO 9001:2015**

*This Certificate is valid for the following scope*

**Supplier for Steel Structure and Building Material, Including  
Manufacturing Services for Epoxy Coated Dowel Bars & Cutting.**

Certificate No.	:AMER17262
Registration Date	:23/03/2024
Issue Date	:09/04/2025 R1
Expiry Date	:22/03/2026
Recertification Date	:22/03/2027



  
Director

### **AMERICO QUALITY STANDARDS REGISTECH PVT. LTD**

Accredited by UAF, 1060 Laskin Rd, Suite: 12B/13B, Virginia Beach VA 23451, USA

Operations office: D 303 , Nisarg plaza, Bhumkar Chowk, Wakad, Pune 411057



CM-MS-7842





# CERTIFICATE

*This is to certify that the Environmental Management System of*  
**MADAD GATE TRADING COMPANY**  
Al Fayha, Dammam, Saudi Arabia P.O. Box 3503, Dammam 32441

*has been assessed and found to conform to the requirements of*  
**ISO 14001:2015**  
*This Certificate is valid for the following scope*

**Supplier for Steel Structure and Building Material, Including  
Manufacturing Services for Epoxy Coated Dowel Bars & Cutting.**

Certificate No.	:AMER26647
Original Issue Date	:01/05/2025
Issue Date	:01/05/2025 R0
Surveillance /Expiry Date	:30/04/2026
Recertification Date	:30/04/2028



  
Director

**AMERICO QUALITY STANDARDS REGISTECH PVT. LTD**

Accredited by UAF, 1060 Laskin Rd, Suite: 12B/13B, Virginia Beach VA 23451, USA  
Operations office: D 303 , Nisarg plaza, Bhumkar Chowk, Wakad, Pune 411057



CM-MS-7836





# CERTIFICATE

*This is to certify that the Occupational Health and Safety Management System of*

## **MADAD GATE TRADING COMPANY**

**Al Fayha, Dammam, Saudi Arabia P.O. Box 3503, Dammam 32441**

*has been assessed and found to conform to the requirements of*

# **ISO 45001:2018**

*This Certificate is valid for the following scope*

**Supplier for Steel Structure and Building Material, Including  
Manufacturing Services for Epoxy Coated Dowel Bars & Cutting.**

Certificate No.	:AMER26646
Original Issue Date	:01/05/2025
Issue Date	:01/05/2025 R0
Surveillance /Expiry Date	:30/04/2026
Recertification Date	:30/04/2028



*Bhavne*  
Director

### **AMERICO QUALITY STANDARDS REGISTECH PVT. LTD**

Accredited by UAF, 1060 Laskin Rd, Suite: 12B/13B, Virginia Beach VA 23451, USA

Operations office: D 303 , Nisarg plaza, Bhumkar Chowk, Wakad, Pune 411057



CM-MS-7832



# Vendors

سابك  
SABIC

أرامكو السعودية  
saudi aramco



الهيئة الملكية للجبيل وينبع  
Royal Commission for Jubail & Yanbu



الشركة السعودية للكهرباء  
Saudi Electricity Company



SAUDI  
ENTERTAINMENT  
VENTURES

معادن  
MA'ADEN  
Saudi Arabian Mining Company



The Red Sea  
Development  
Company

الهيئة الملكية لمحافظة العُلا  
ROYAL COMMISSION FOR ALULA



نيوم NEOM

البواني  
AL BAWANI

شركة المياه الوطنية  
National Water Company



SAR  
الخطوط الحديدية السعودية  
SAUDI ARABIA RAILWAYS